

# Testmaster RT187-2

Roller brake tester according to Mercedes-Benz criteria catalogue



## Application

- ☐ Check-in
- ☐ Repair and maintenance
- ☐ Testing
- ☐ General inspection

## Optional extra: Digital display



## Description:

- ☐ 2 galvanized roller sets (split version) for hanging installation (frame required for weighing device, also if retro-fitted)
- ☐ Motors with planetary gears, enormous brake power
- ☐ Wear resistant rollers
- ☐ Wear resistant and modern electronic strain gauge measuring system
- ☐ 80 mm rollers
- ☐ Prepared for retrofitting of weighing device
- ☐ Modular system, all roller sets can be fitted with options
- ☐ Compact electric / switchbox, prepared for upgrade
- ☐ Equipped as standard with drive-off system
- ☐ Manual / Automatic mode
- ☐ Delayed switch-on, start-up monitoring
- ☐ Lockable main switch
- ☐ Optionally with large easily read analogue display or with PC-connection kit and PC software

## Version complies with the catalogue of criteria:

- ☐ Galvanized roller sets with electric / switch box
- ☐ 2 x 11.0 kW motors
- ☐ Plastic coated rollers
- ☐ PC-Software Display Testlane
- ☐ PC connection kit (without PC)

- ☐ Wireless remote control
- ☐ Rotation direction reversal & single wheel stop
- ☐ EDOS (Easy drive-out system)
- ☐ Weighing device
- ☐ Pressure converter basic version for PC
- ☐ Also available with analogue display

## Optional extras:

- ☐ Simultaneous display
- ☐ Digital display LED-D4
- ☐ Pit protection for pit installation
- ☐ Roller set lifting for load simulation
- ☐ Variable stop function for roller set lifting
- ☐ Preparation for Semmler roller
- ☐ Preparation VDO Kinzel
- ☐ Radio pedal force meter
- ☐ 1500mm rollers for low loader
- ☐ Automatic all-wheel detection
- ☐ Roller prism cover
- ☐ Fast track plate
- ☐ Database software
- ☐ SP connection box
- ☐ ASA Livestream



Scan the QR-Code  
for detailed product information.

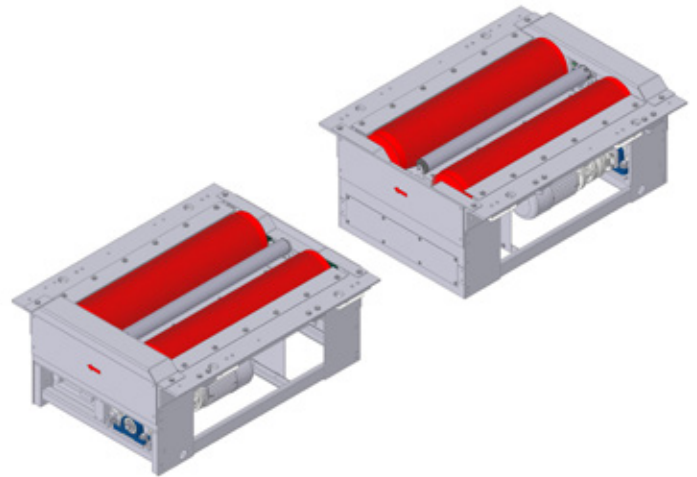
Further Information on  
[www.autopstenhoj.com](http://www.autopstenhoj.com)



Manufacturer's certificate  
can be provided on request

#### Technical data

Drive-over load	18,000 kg
Brake force	40 kN
Testing speed	2.6 km/h
Motors	2 x 11 kW
Roller diameter	265 mm
Test width	1,150 mm
Test load	at 50% braking 16 t
Fuse	50 A inert
Power supply	3 x 400 V, N, PE 50 Hz
Dimensions, analogue display box (W x H x D)	810 x 670 x 70 mm
Dimensions, roller set (L x W x H)	1,390 x 1,145 x 554 mm

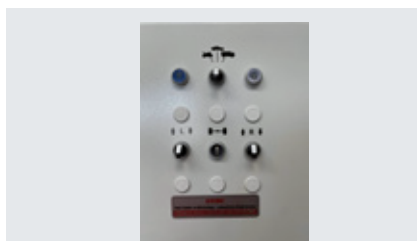


#### Supplement for use of passenger cars:

- ☐ 2nd testing speed
- ☐ Pedal force meter for passenger cars



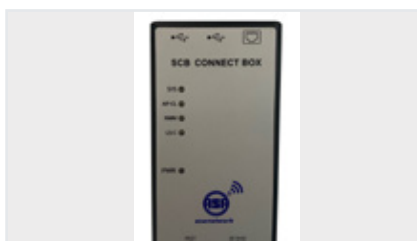
Analogue display with digital display  
LED - D4



Selector switch 2nd test speed



Lifting device 150 or 220 mm



SP-connection



Roller prism cover