

Testmaster RT40

Roller brake tester according to Mercedes-Benz criteria catalogue



Application

- Check-in
- Repair and maintenance
- Testing
- General inspection

Description:

- Galvanized, enclosed roller set
- Wear resistant 205 mm rollers with welded profile surface
- Track width RT40: from 800 to 2,200 mm (optional 2,800 mm)
- Height adjustment screws
- Wear resistant and modern electronic strain gauge measuring system
- 50 mm sensor rollers
- Prepared for retrofitting of weighing device
- Modular system, all roller sets can be extended to test lanes
- Compact electric / switchbox, prepared for upgrade
- Drive-over axle load RT 40 4.0 to (optional 5 t)
- Brake force RT 40 6 kN
- Equipped as standard with drive-off system
- Manual / Automatic mode
- Delayed switch-on, start-up monitoring
- Test program for electronic parking brakes
- Lockable main switch
- Optionally with large easily read analogue display or with PC-connection kit and PC software

Version complies with the catalogue of criteria:

- Roller set with electric / switch box
- 2 x 4.0 kW motors
- Plastic coated rollers

- Software Display Basic
- PC-connection kit (without PC)
- Pedal force meter cable version
- Remote control type IPC
- Also available with analogue display

Optional extras:

- Electronically controlled drive-out aid for automatic vehicles
- Pneumatic lowering/ lifting device
- Raising kit
- Suspension tester
- Side slip tester
- Raising kit
- Suspension tester
- Side slip tester
- All-wheel manual & automatic
- Roller cover plates
- Remote control
- Digital display LED-D4
- Weighing device
- PC connection with ASA Live stream
- PC software Display Office
- Foundation frame
- Lost formwork
- Pit protection





Scan the QR-Code for detailed product information.

Further Information on www.autopstenhoj.com

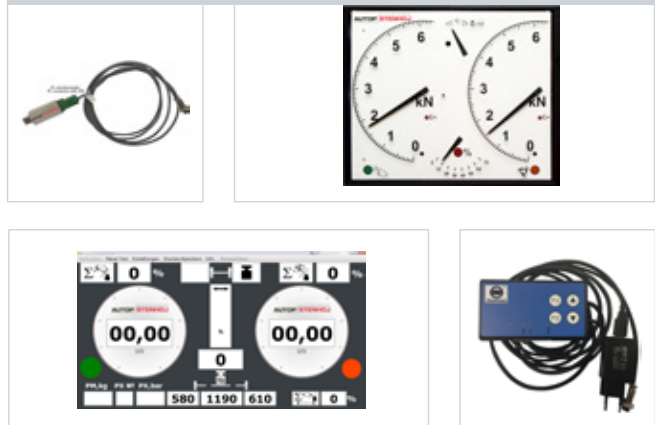


Manufacturer's certificate can be provided on request

Technical data

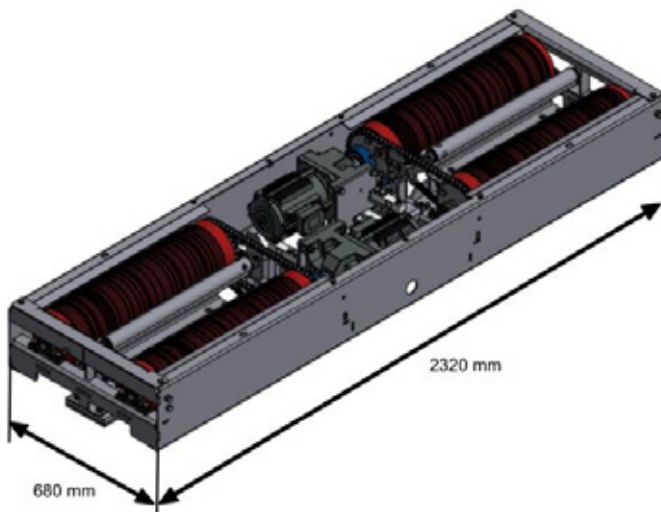
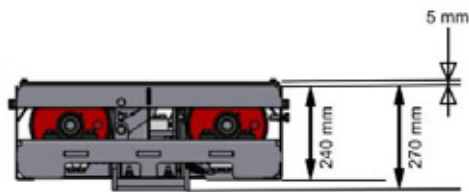
Drive-over load	RT40	4,000 kg
Test speed		5 km/h
Drive power of motors	RT40	2 x 4 kW
Roller diameter		205 mm
Test width	RT40	800 – 2,200 mm
Test load	RT40	at 50 % braking 2.6 t
Fuse		3 x 20 A inert 4 kW motors
Power supply		3 x 400 V, N, PE 50 Hz
Brake force	RT40	6 kN
Dimensions, analogue display box (W x H x D)		810 x 670 x 70 mm
Dimensions, roller set (L x W x H)	RT40	2,320 x 680 x 240 mm (800 - 2,200 mm)

Additional accessories at www.autopstenhoj.com



Supplement for use of transporters:

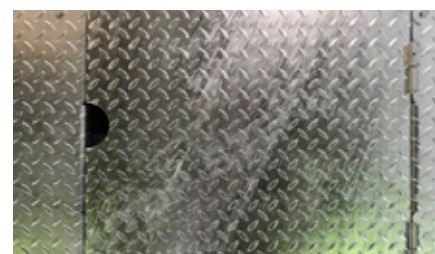
- Reinforced roller set 5 to
- Roller set test width 800 - 2,800 mm



Manually reversible rotation and measuring device



Lowering and lifting device



Roller cover plate