



# Maestro 2.35 NxT

Electro-mechanical 2-post lift, 3.5 t capacity



## Application

- ☐ Repair and maintenance

## Description:

### Posts:

- ☐ Asymmetric post installation, vehicles can be positioned in rear area of work bay, for better door-opening angle
- ☐ Very stable welded posts
- ☐ Without base frame, therefore free drive-in situation
- ☐ Two strong electric motors
- ☐ Cold-rolled spindles for high durability
- ☐ Nylon nut sets for high durability
- ☐ Carriage with 6 guiding wheels and lubrication-free roller bearings, for very low friction
- ☐ Door-stop mounted on carriage
- ☐ Obstruction system for stopping the lift when it hits an obstacle
- ☐ Pushbutton control unit with alarm signal
- ☐ Programmable limit switch for top stop and CE-stop
- ☐ Electronic synchronization through comparison of pulses on both columns

### Arms:

- ☐ Arms DT/ST: Universal lifting area from Smart up to Vito / Viano with lifting pad type „F“
- ☐ Possibility of parallel parking of arms for easier and faster positioning of vehicles
- ☐ Arms can be opened more than 180° for better drive-in situation (+45°) for lifts installed in 90° angle to the drive lane
- ☐ Internal arm locking system, protected against moisture and dirt, with strong 360° interlocking
- ☐ Low minimum height

### Colour according to approval:

- ☐ RAL 7015 - slate grey

### Versions:

- ☐ Available with different voltages
- ☐ F = flex pad

### Optional extras:

- ☐ Available with different portal heights, alternatively inground kit
- ☐ Set of expansion bolts
- ☐ LED-lighting set
- ☐ Energy set with compressed air and socket-outlet
- ☐ Extra control unit for second column
- ☐ Wheel supports
- ☐ Large program of extra pads, depending on type of vehicle



Scan the QR-Code  
for detailed product information.

Further Information on  
[www.autopstenhoj.com](http://www.autopstenhoj.com)

**AUTOPSTENHOJ GMBH**  
Sandkampstr. 90  
D-48432 Rheine  
Tel. +49 5971 860202  
Email: [info@autopstenhoj.com](mailto:info@autopstenhoj.com)

**AUTOPSTENHOJ GMBH**  
Barrit Langgade 188-190  
DK-7150 Barrit  
Tel. +45 76 82 13 30  
Email: [info@autopstenhoj.com](mailto:info@autopstenhoj.com)



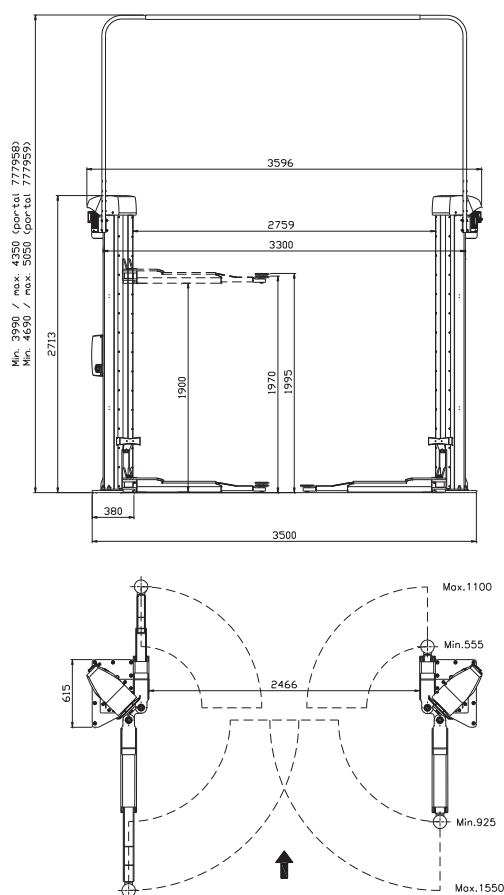
Recommended by Mercedes Benz  
098439

#### Technical data

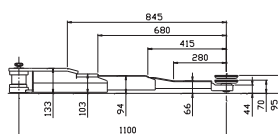
Lifting capacity	3,500 kg
Lifting height	1,900 mm
Working height	1,970 – 2,035 mm + 65 mm pad extensions
Lifting / lowering time	approx. 35 sec.
Motor	2 x 2.8 kW
Voltage	3x230/400 V-50Hz - 20A

#### Arm superstructure

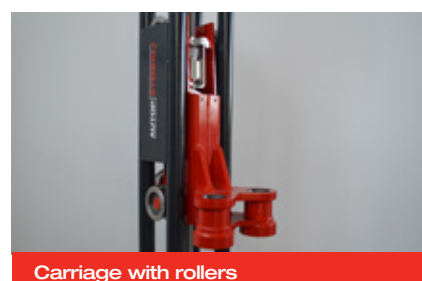
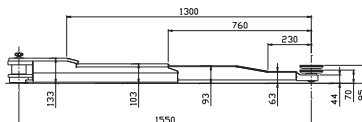
Lifting pad included in the delivery	95 mm
Min. height	95 - 135 mm
Drive-through width	DT/ST: 2,466 mm
Width between posts	DT/ST: 2,759 mm
Total width - outer edges base plates	DT/ST: 3.500 mm
Total height post	2,713 mm
Total height incl. Portal	3,990 - 4,350 mm
Arm length front, min. - max.	DT: 555 - 1.100 mm
Arm length rear, min. - max.	ST: 925 - 1.550 mm



Short arm



Long arm



The product meets the requirements for workshop equipment for MB service workshops and is recommended by Mercedes Benz with approval no. 098439.